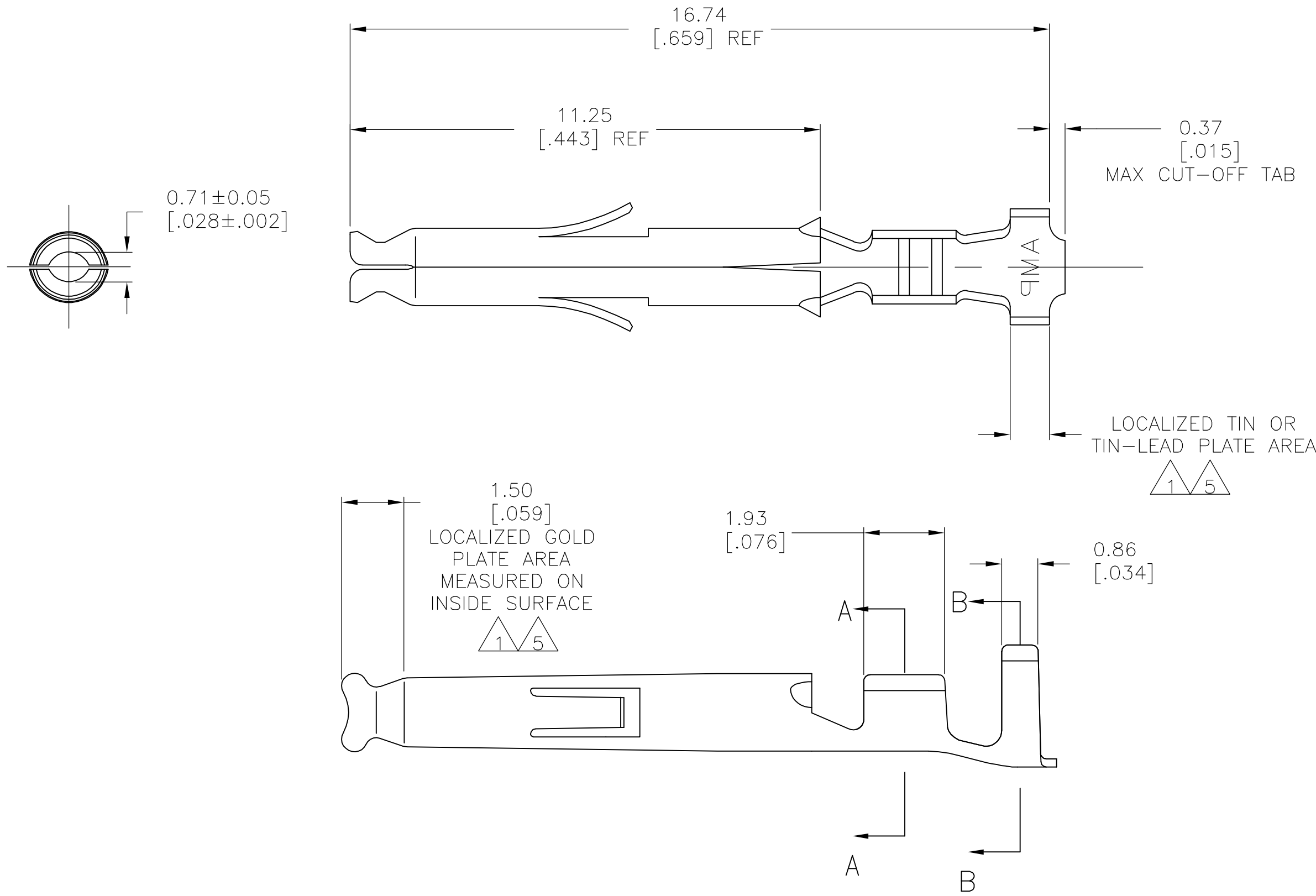
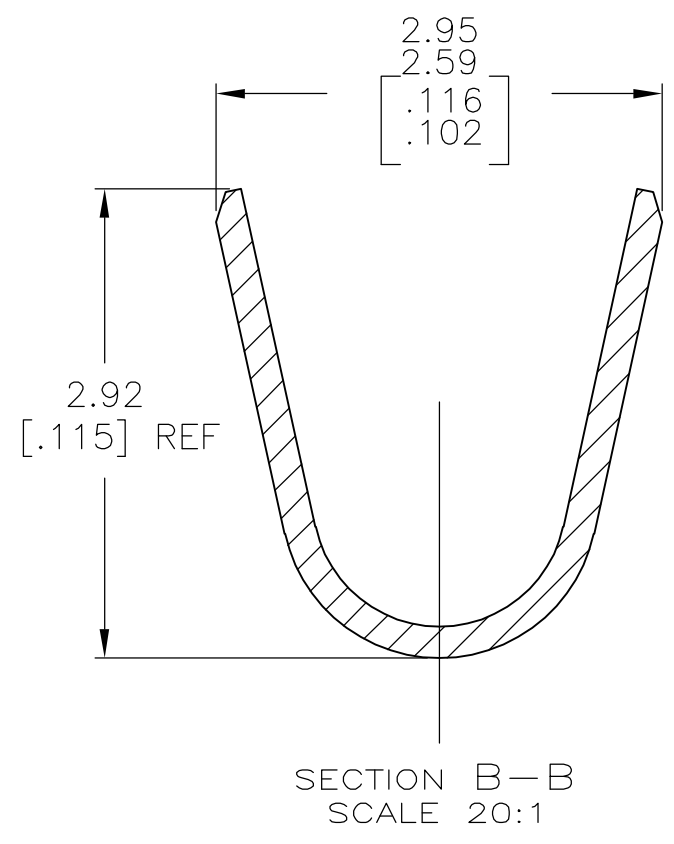
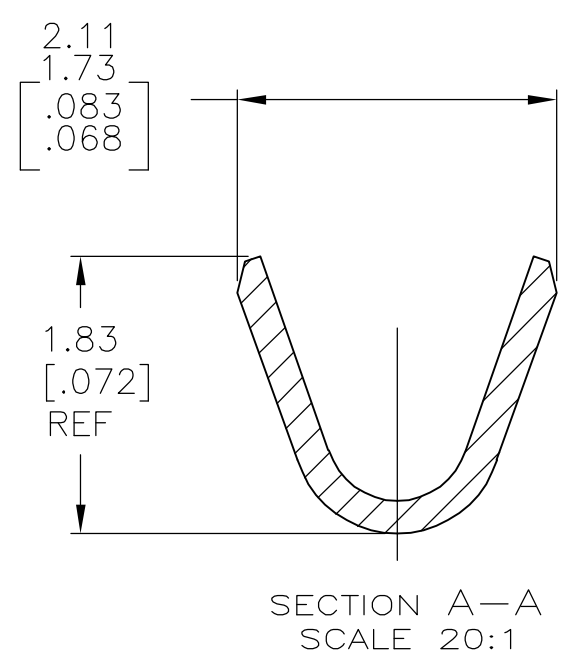


THIS DRAWING IS UNPUBLISHED. RELEASED FOR PUBLICATION  
 © COPYRIGHT BY TYCO ELECTRONICS CORPORATION. ALL RIGHTS RESERVED.

LOC		DIST		REVISIONS			
P	LTR	DESCRIPTION		DATE	DWN	APVD	
CM	00	H		EC 063B 0214 05	19AUG05	BSV	CJ



- 1 0.00076 [.000030] MIN GOLD IN LOCALIZED GOLD PLATE AREA AND 0.00254 [.000100] MIN BRIGHT TIN-LEAD IN LOCALIZED TIN-LEAD PLATE AREA OVER 0.0013 [.000050] MIN NICKEL.
- 2. WIRE RANGE: 0.12-0.4mm<sup>2</sup> (26-22 AWG).
- 3. INSULATION RANGE: 1.20-1.75 [.047-.069] DIA.
- 4. DIMENSIONS IN BRACKETS ARE IN INCHES.
- 5 0.00076 [.000030] MIN GOLD IN LOCALIZED GOLD PLATE AREA AND 0.00254 [.000100] MIN BRIGHT TIN IN LOCALIZED TIN PLATE AREA OVER 0.0013 [.000050] MIN NICKEL.



5	0.20 [.008] PH BRZ	1-770986-1
5	0.20 [.008] BRASS	1-770986-0
1	0.20 [.008] BRASS	770986-3
PRE-TIN	0.20 [.008] BRASS	770986-1
FINISH	MATERIAL	PART NUMBER

THIS DRAWING IS A CONTROLLED DOCUMENT.

DWN	S. HOOVER	18OCT02	 Tyco Electronics Corporation Harrisburg, PA 17105-3608
CHK	C. JONES	18OCT02	
APVD	C. JONES	18OCT02	
PRODUCT SPEC			
APPLICATION SPEC			NAME
MATERIAL			SOCKET, LOOSE PIECE, MINI UNIVERSAL MATE-N-LOK(TM)
FINISH			RESTRICTED TO
SEE TABLE			SCALE
SEE TABLE			10:1
CUSTOMER DRAWING			SHEET
CUSTOMER DRAWING			1 OF 1
CUSTOMER DRAWING			REV
CUSTOMER DRAWING			H

METRIC